



**DrumCore AU, RTAS, and VST plug-in  
Version 3.0 for Windows and Mac OS X**

Submersible Music  
505 Fifth Avenue South, Suite 900  
505 Union Station  
Seattle, WA 98104  
[www.drumcore.com](http://www.drumcore.com)

## Copyright

© 2009 Submersible Music Inc. All rights reserved. This guide may not be reproduced or transmitted in whole or in part in any form or by any means without the prior written consent of Submersible Music Inc.

DrumCore™ and Gabrielizer™ are trademarks of Submersible Music Inc. All other trademarks found herein are the property of their respective owners.

Pentium is a registered trademark of Intel Corporation.

AMD and Athlon are trademarks of Advanced Micro Devices, Inc.

Windows and DirectSound are registered trademarks of Microsoft Corporation in the United States and other countries.

Mac, Power Mac, PowerBook, and the Mac logo are trademarks of Apple Computer, Inc., registered in the U.S. and other countries.

ACID, ACID Music Studio, and ACID Pro are trademarks or registered trademarks of Madison Media Software, Inc., a subsidiary of Sony Corporation of America or its affiliates in the United States and other countries.

Digital Performer is a registered trademark of Mark of the Unicorn, Inc.

Fruityloops is a registered trademark of Image Line Buba.

Logic and Garageband are trademarks of Apple Computer, Inc.

Nuendo and Cubase are registered trademarks of Steinberg Media Technologies GmbH.

Pro Tools is a registered trademark of Avid Technology, Inc.

Samplitude is a registered trademark of Magix AG.

Sonar is a registered trademark of Twelve Tone Systems, Inc.

ASIO is a trademark of Steinberg Soft- und Hardware GmbH.

REX™ by Propellerhead, © Propellerhead Software AB.

All trademarks contained herein are the property of their respective owners.

All features and specifications of this guide or the DrumCore product are subject to change without notice.

# Table of Contents

---

<b>Chapter 1: Introduction</b> .....	1
Features .....	1
System Requirements .....	3
Register DrumCore .....	3
Conventions Used in This Guide .....	4
<b>Chapter 2: Installation and Authorization</b> .....	5
Installing DrumCore .....	5
Authorizing DrumCore .....	6
<b>Chapter 3: Using DrumCore</b> .....	9
DrumCore Plug-in Window .....	9
Grooves .....	11
Gabrielizer .....	15
Exporting Audio and MIDI .....	17
<b>Chapter 4: MIDI DrumKits</b> .....	21
DrumKits .....	21
DrumCore Pads .....	22
Saving Kits as Presets .....	25
<b>Chapter 5: DrumCore Settings</b> .....	27
DrumCore Data Location .....	27
Export Location .....	28
Export Format .....	28
Default Settings .....	29
About .....	29
Register .....	29

**Chapter 5: Using DrumCore with your DAW** . . . . . 31

- Using DrumCore with Ableton Live . . . . . 31
- Using DrumCore with Cubase . . . . . 37
- Using DrumCore with Digital Performer . . . . . 41
- Using DrumCore with Logic . . . . . 47
- Using DrumCore with Pro Tools . . . . . 50
- Using DrumCore with Sonar . . . . . 55
- Using DrumCore with Other Audio and MIDI Applications . . . . . 59

# Chapter 1: Introduction

Congratulations on your purchase of DrumCore! DrumCore is the ideal solution for anyone who needs professional drum parts in any style within seconds. Use DrumCore to dial-in the perfect beat for composing, arranging, remixing, or just flat out jamming. Since DrumCore supports AU (Mac only), RTAS, and VST plug-in formats, you can take advantage of its extensive rhythmic catalog as an integrated rhythm machine within your favorite DAW (such as Pro Tools<sup>®</sup>, Digital Performer<sup>®</sup>, Sonar<sup>®</sup>, Nuendo<sup>®</sup>, or Logic<sup>®</sup>).

Search for the perfect groove quickly and easily using DrumCore's intuitive browser interface. DrumCore boasts of an extensive library of rhythmic content recorded by professional drummers and percussionists of the highest calibre—such as Alan White (John Lennon, Yes), Terry Bozzio (Frank Zappa, Missing Persons), Matt Sorum (The Cult, Guns and Roses, Velvet Revolver), Sly Dunbar (Bob Marley, Peter Tosh), Zoro (Bobby Brown, Lenny Kravitz), and more!—using state-of-art digital and vintage recording gear in the best possible acoustic environments.

Furthermore, DrumCore's catalog is expandable: Using DrumCore Toolkit, you can import your own audio samples, rhythmic content, and build your own DrumKits.



*For information on using DrumCore Toolkit, see the DrumCore Toolkit Guide.*

---

## Features

DrumCore features:

- AU (Mac only), RTAS, and VST-compatibility integrates DrumCore with your favorite multi-track audio and MIDI sequencing program (e.g., Pro Tools, Digital Performer, Sonar, Logic, Nuendo, Live, etc.). See “Chapter 5: Using DrumCore with your DAW.”
- An extensive catalog of the highest quality rhythmic content. DrumCore's database of audio drum loops and hits were recorded with world-class drummers in state of the art studios. Each groove includes variations and fills in addition to the basic beats. Every groove was recorded at multiple tempos so that you get the groove you want at the tempo you want, with all of the artist's nuance at each tempo and without the artifacts introduced by common time-compression and expansion algorithms. Most grooves in DrumCore's database also have a MIDI version, which provides an even greater degree of flexibility in conjunction with DrumCore's DrumKits.
- Factory DrumCore content is 24-bit and 48 kHz.
- Factory DrumCore content can be exported as REX files to your DAW to automatically match your project tempo.

- MIDI DrumKits—DrumCore provides multiple sampled DrumKits of the drummers' kits to match DrumCore's extensive collection of MIDI grooves. You can play DrumCore's DrumKits from DrumCore's own catalog of MIDI grooves, or from your DAW (see "Chapter 4: MIDI DrumKits"). Using DrumCore Toolkit, you can also create your own MIDI DrumKits (see the *DrumCore Toolkit Guide*).
- Mix and match pads from different DrumKits.
- DrumCore provides separate outputs for each pad of the MIDI DrumKit for independent mixing and processing in your DAW.
- Drag and drop files (audio and MIDI) to the Desktop or to any DAW that supports drag and drop (such as Cubase, Pro Tools, Digital Performer, or Logic).
- An intuitive, easy to use search engine to find the perfect groove, drum loop, or fill. You can sort loops by tempo, style, drummer, and several other relevant criteria. Using DrumCore Toolkit, you can even import your own audio or MIDI files and provide your own metadata (including "style" and "feel" definitions) for quick search and retrieval.
- The Gabrielizer™, a tool for beat manipulation, lets you quickly and easily reshuffle your audio and MIDI loops to create new unique and interesting rhythms. See "Gabrielizer" on page 15.

### DrumCore Toolkit Features:

- When updating to DrumCore 3, use the Import DrumCore Database command to import all of your custom content and any previously installed DrumCore DrummerPacks.
- Import DrummerPacks purchased from Submersible Music.
- Using DrumCore Toolkit, you can import your own audio (AIF, WAV, SD II, REX, and ACID) and MIDI files, and provide your own metadata (including "style" definitions) for quick search and retrieval.
- Edit metadata for factory and custom content to facilitate quick and easy "searchability."
- Create your own custom DrumKits using your own drum samples.
- CoreAudio (Mac), and Direct Sound or ASIO (Windows) support for auditioning audio and MIDI grooves.
- Stand-alone MIDI capabilities for playing MIDI DrumKits from any MIDI controller.



*For more information about the DrumCore Toolkit application, see the DrumCore Toolkit Guide.*

---

## System Requirements

You must have Administrator Access on your computer to install DrumCore.

When using DrumCore as a plug-in with a host application, such as Pro Tools or Ableton Live, DrumCore's system requirements are in addition to the host application's requirements.



DrumCore 3.0 no longer supports ReWire.

### Minimum Requirements for Macintosh

- Apple® Macintosh® Power Mac® or PowerBook® G4 1 GHz or faster
- 2 GB RAM, 4 GB or more recommended
- At least 16 GB of available Hard Drive space for Drum Loop Content and application
- DVD ROM Drive (for installation)
- Mac OS X (v10.4 or higher)
- 1024 X 768 minimum display resolution

### Minimum Requirements for Windows

- Intel® Pentium® 4 processor or faster
- 2 GB RAM, 4 GB or more recommended
- At least 16 GB of available Hard Drive space for Drum Loop Content
- DVD ROM Drive (for installation)
- Windows XP or Windows Vista
- 1024 X 768 minimum display resolution



*DrumCore 3 is not qualified for 64-bit applications on 64-bit Operating Systems.*

---

## Register DrumCore

You must register DrumCore to receive your DrumCore authorization code. Your registration and authorization code will work for both the DrumCore plug-ins and for the DrumCore Toolkit application. Registered users can receive technical support by email or on the DrumCore Web site. The initial response time for technical support inquiries is within 24 hours. Registered users will also receive periodic software update and upgrade notices.

---

## Conventions Used in This Guide

This guide observes the following conventions to indicate menu choices and key commands:

Convention	Action
File > Import Files	Choose Import Files from the File menu
Ctrl+I on Windows or Command+I on Macintosh	Hold down the Ctrl key on Windows or the Command key on Macintosh and press the I key
Ctrl-click on Windows or Command-click on Macintosh	Hold down the Ctrl key on Windows or the Command key on Macintosh and click the mouse button

The following symbols are used to highlight important information:



*User Tips are helpful hints for getting the most out of DrumCore.*



*Important Notices include information that could affect DrumCore's performance.*



*Shortcuts show you useful keyboard or mouse shortcuts.*



*Cross References point to related sections in the guide.*



# Chapter 2: Installation and Authorization

---

## Installing DrumCore

DrumCore requires at least 16 GB of available storage space. If your system does not have at least 16 Gb of available storage space, DrumCore cannot be installed.

## Installing DrumCore on Macintosh

To install DrumCore:

- 1 Insert the DrumCore Installer disc into your computer's DVD drive.
- 2 Double-click the DrumCore 3 installer icon.
- 3 Follow the on-screen instructions to install the DrumCore plug-ins, the DrumCore Toolkit application, and all DrumCore content.
- 4 When installation is complete, quit the DrumCore installer.



*If you are upgrading from an earlier version of DrumCore, and have your own custom content or any previously installed DrummerPacks, use the DrumCore Toolkit to import all of your previous DrumCore content into DrumCore 3. See the DrumCore Toolkit Guide for more information.*

DrumCore installs the following:

- DrumCore Audio Units plug-in: /Library/Audio/Plug-Ins/Components/DrumCore.component
- DrumCore RTAS plug-in:
  - If Pro Tools is installed: /Library/Application Support/Digidesign/Plug-Ins/DrumCore.dpm
  - or -
  - If Pro Tools is not installed: /Library/Application Support/Submersible/
- DrumCore VST plug-in: /Library/Audio/Plug-Ins/VST/DrumCore.vst
- DrumCore Plug-in Guide (/Applications/DrumCore 3/)
- DrumCore Toolkit Guide (/Applications/DrumCore 3/)
- DrumCore Data (/Applications/ by default, unless specified otherwise)
- DrumCore Engine (/Library/Application Support/DrumCore Engine)

## Installing DrumCore on Windows

To install DrumCore:

- 1 Insert the DrumCore Installer disc into your computer's DVD drive.
- 2 Double-click the installer icon.
- 3 Follow the on-screen instructions to install the DrumCore plug-ins, the DrumCore Toolkit application, and all DrumCore content.
- 4 When installation is complete, exit the DrumCore installer.



*If you are upgrading from an earlier version of DrumCore, and have your own custom content or any previously installed DrummerPacks, use the DrumCore Toolkit to import all of your previous DrumCore content into DrumCore 3. See DrumCore Toolkit Guide for more information.*

DrumCore installs the following:

- DrumCore RTAS plug-in:
  - C:\Program Files\Common Files\Digi-design\DAE\Plug-Ins\DrumCore.dpm (if Pro Tools *is* installed)
- or -
- C:\Program Files\Submersible\DrumCore\Plug-Ins\RTAS (if Pro Tools is *not* installed)
- DrumCore VST plug-in: C:\Program Files\Vstplugins (if present, otherwise Submersible\DrumCore 3\Plug-ins\)
- DrumCore Guide (C:\Program Files\Submersible\DrumCore 3\, unless specified otherwise)
- DrumCore Toolkit Guide (C:\Program Files\Submersible\DrumCore 3\, unless specified otherwise)

- DrumCore Data (C:\Program Files\Submersible\DrumCore 3\ by default, unless specified otherwise)

---

## Authorizing DrumCore

DrumCore plug-ins and the DrumCore Toolkit application require an authorization code in order to run. You must register your copy of DrumCore in order to receive your DrumCore authorization code. Your DrumCore authorization code will work for both the DrumCore plug-ins and the DrumCore Toolkit application.

To authorize DrumCore:

- 1 Do one of the following:
  - Launch your AU, RTAS, or VST host application (such as Logic, Pro Tools, or Cubase) and insert DrumCore on a track, you will be prompted to register DrumCore.
  - or -
  - Launch the DrumCore Toolkit application, you will be prompted to register DrumCore.

2 Click OK. The Register DrumCore window opens.

**Register DrumCore**

**Step 1.) Enter your name and Serial Number**

Enter your name (as you want it to appear in DrumCore):

Enter your SERIAL NUMBER (16 numerical digits) from the Registration Card:

**Step 2.) Generate a Challenge Code**

Generate a unique CHALLENGE CODE (28 lowercase letters) by clicking on the button below:

**Generate Challenge Code**

**Step 3.) Register at DrumCore.com for a Response Code**

Click on the following link to register via the DrumCore website. If you can't access DrumCore.com from this machine then copy your SERIAL NUMBER and CHALLENGE CODE (from above) and register using any web-enabled computer.

<https://secure.drumcore.com/register/kitcore.aspx>

If you can't register via the website, send an email to [register@drumcore.com](mailto:register@drumcore.com) with your name, Serial Number and Challenge Code from above. You will receive a Response Code which you can enter below to authorize DrumCore.

**Step 4.) Use the Response Code to authorize DrumCore**

Copy the RESPONSE CODE and paste it in below. The Response Code is generated on the DrumCore website when you register and consists of 24 uppercase letters.

**Help** **Cancel** **30-Day Demo** **Authorize**

*Register DrumCore window*

3 Enter your Name and Serial Number (your serial number is located on your DrumCore Registration card).

4 Click the Generate Challenge Code button. A unique “challenge” code (a series of 28 lowercase letters) will be generated and displayed in the Challenge Code field.

5 Register DrumCore by doing the following:

- Click the hyper link to Submersible Music's secure website.
- Your default Web browser will launch the DrumCore Product Registration page.
- Your Name, Serial Number, and Challenge Code should be entered automatically. If not, type in your Name, Serial Number, and Challenge Code.
- Enter your email address (your authorization code will be sent to this email address).
- Click the Submit Registration button.

If you are unable to register DrumCore using the DrumCore website, send an email to [register@submersiblemusic.com](mailto:register@submersiblemusic.com) with your Name, Serial Number, Challenge Code, and email address (your authorization code will be sent to this email address).



*You must register DrumCore to receive your authorization code.*

6 A unique “response” code (a series of 24 uppercase letters) will be emailed to you. However, until you receive your authorization code, click the 30-Day Demo button to use DrumCore.



*DrumCore is fully functional for the duration of the 30-day demo period. After 30 days you must enter your authorization code to continue using DrumCore.*

7 When you receive your response code, enter it in the Response Code field and click the Authorize button. You can access the Register DrumCore window from the DrumCore Settings tab in the DrumCore Plug-in window (see “Chapter 5: DrumCore Settings”). You can also access the Register DrumCore window in the DrumCore Toolkit application by choosing Windows > Register.



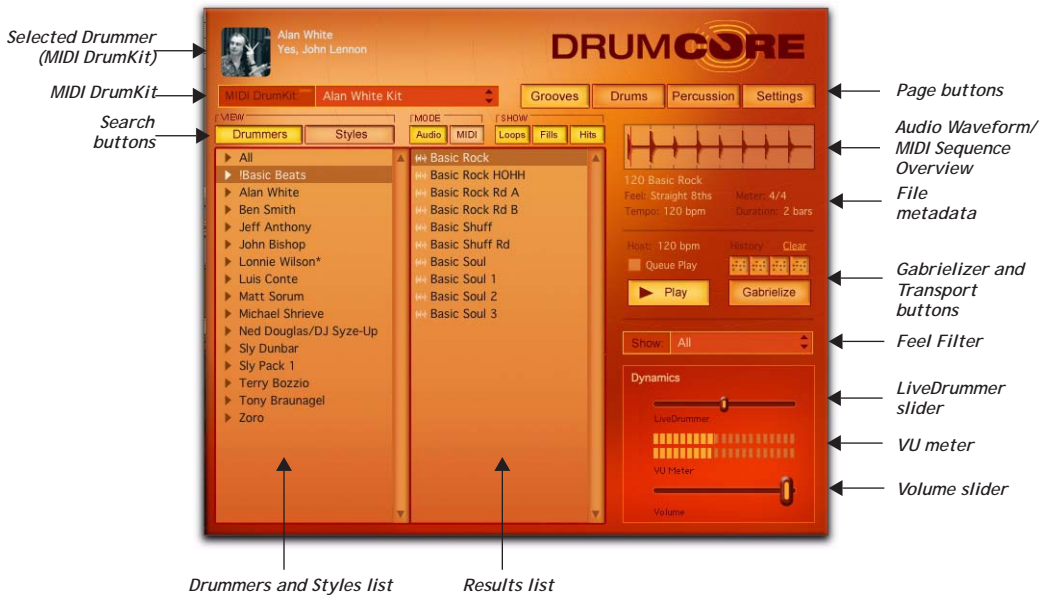
# Chapter 3: Using DrumCore

DrumCore is a virtual instrument plug-in in AU, RTAS, and VST plug-in formats. DrumCore provides an extensive database of audio and MIDI drum loops, fills, and hits. You can play DrumCore's audio and MIDI grooves in real-time or import them into your DAW for further arranging, mixing, and editing.

DrumCore also provides multiple sampled drum kits of some of the best drummers in the business for playing back MIDI grooves from DrumCore's database, or for MIDI drum programming with your DAW. DrumCore uses the same standard General MIDI (GM) MIDI note mappings for all of its drum kits.

## DrumCore Plug-in Window

DrumCore provides immediate access to the most commonly used search controls, a browser-like interface to the database, playback and volume controls, and the Gabrielizer™.



DrumCore Plug-in User Interface

To open the DrumCore plug-in:

- 1 Launch your favorite DAW (such as Cubase, Live, or Pro Tools).
- 2 Insert the DrumCore plug-in on a track. The DrumCore Plug-in window opens.



*DrumCore Plug-in window (Grooves tab)*

## DrumKit Indicator

The DrumKit Indicator displays the currently selected DrumKit. Click the DrumKit Indicator to open the DrumKit Editor. For more information on the DrumKits Editor, see "Chapter ."

## View Buttons and GrooveSets List

Use the View buttons to select the search category (Drummers or Styles). Select the desired Drummer or Style to organize how GrooveSets are viewed.

## Results List

The Results list displays the results of a search. Select the desired groove from the Results list. Grooves are typically grouped as a collection of beats and fills that work together (for example, in different parts of a song arrangement).

## Mode and Show Buttons

Use the Mode and Show buttons to search for Audio or MIDI files, and Loops, Fills, or Hits (audio only).

## Audio Waveform/MIDI Sequence Overview

The Audio Waveform/MIDI Sequence Overview displays an overview of the currently selected audio or MIDI file for visual reference only.

## Queue Play Mode

The Queue Play Mode toggle enables (or disables) Queue Play Mode. When Queue Play Mode is enabled, you can select a second file (Audio or MIDI Loop or Fill) to start playback as soon as the currently selected file finishes playing. When Queue Play Mode is disabled, any newly selected file begins playing immediately, cutting off playback of the previously selected file.

## Transport Button

Use the Transport button to start and stop playback of the selected item in the Results list.

## Gabrielize Buttons

Click the Gabrielize button to "Gabrielize," the selected file.

## Dynamics Controls

Use the Volume slider to attenuate DrumCore's main output volume. The Volume meter provide a VU display of DrumCore's main output. For MIDI grooves, adjust the LiveDrummer slider to breath a little life into the MID drum pattern.

---

## Grooves

When you install DrumCore, you get an extensive library of audio and MIDI files, or “GrooveSets,” that you can import into your DAW. GrooveSets logically group beats, fills, and variations of different drum loops and patterns that work well together. The content reflects the featured drummer’s musical sensibilities as they played these parts together as one song.

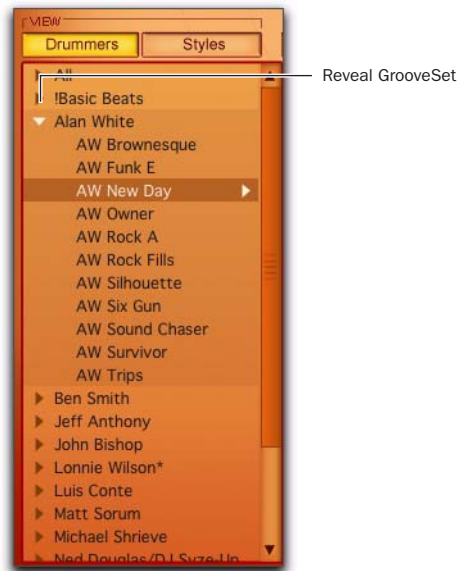
The Grooves tab in DrumCore lets you sort, filter, and audition DrumCore GrooveSets. When you find the groove you want, you can drag and drop it from the Results list right into your DAW for further editing, mixing, and arranging. Use any combination of DrumCore’s extensive library of audio loops and MIDI drum patterns, and edit and arrange them in your DAW to get the perfect drum track for any project.

## Drummers and Styles

The Drummer and Styles list lets you sort DrumCore’s GrooveSets either by drummer or style.

**To organize GrooveSets by Drummer:**

- 1 Click the Drummers button in the Grooves page.
- 2 Click the Reveal GrooveSet triangle for the drummer you want.



*Drummers list*

- 3 Select the GrooveSet you want to view the Results list (see “Loops, Fills, and Hits” on page 12).

To organize GrooveSets by Style:

- 1 Click the Styles button in the Grooves page.
- 2 Click the Reveal GrooveSet triangle for the style you want.



*Styles list*

- 3 Select the Mode options to show Audio or MIDI files (see “Audio and MIDI” on page 12).
- 4 Select the Show options to view Loops, Fills, or Hits (see “Loops, Fills, and Hits” on page 12).

## Audio and MIDI

Once you have selected the desired GrooveSet, you can select whether you want to view audio or MIDI grooves.

To show audio or MIDI grooves:

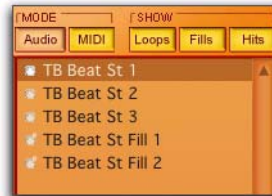
- Click the Audio button so that it is highlighted. Only audio grooves are shown in the Results list.



*Audio grooves, Loops and Fills*

- or -

- Click the MIDI button so that it is highlighted. Only MIDI grooves are shown in the Results list.



*MIDI grooves, Loops and Fills*

## Loops, Fills, and Hits

Once you have selected the GrooveSet you want in the Drummers or Styles List, and you have selected either Audio or MIDI mode, you can further filter the Results list to show any combination of loops, fills, or hits (audio only).



To show audio or MIDI loops, fills, and hits:

■ Click any of the following Show buttons to enable (highlighted) or disable what is shown in the Results list:

- Loops
- Fills
- Hits (audio files only)



Results list, Audio Loops shown



Results list, MIDI Loops shown



Results list, Audio Fills shown



Results list, MIDI Fills shown



Results list, Audio Hits shown

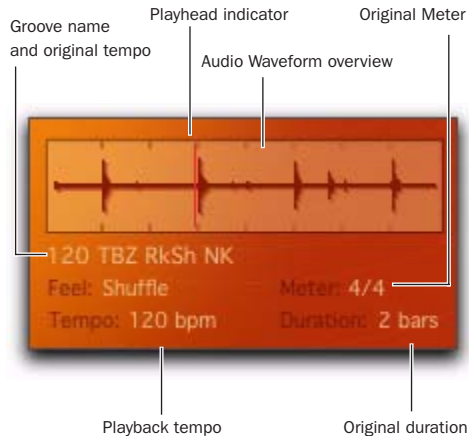
## Groove Metadata

When a groove is selected in the Grooves list, the metadata for that groove is displayed along with an overview of the audio (time domain representation) or MIDI pattern (piano roll-style representation).



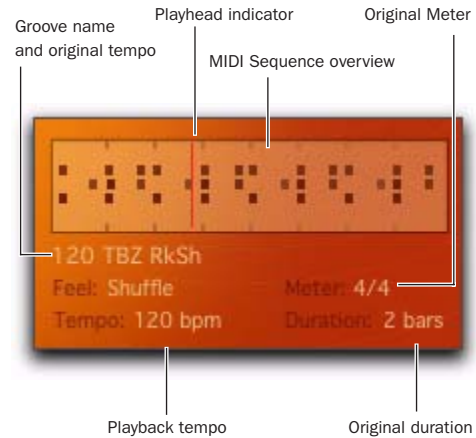
Use *DrumCore Toolkit* edit metadata. For more information, see the *DrumCore Toolkit Guide*.

**Audio Waveform Overview** Provides a visual time domain—representation of the Audio drum groove.



*Audio Groove overview and metadata*

**MIDI Sequence Overview** Provides a visual piano roll—style representation of the MIDI drum pattern.



*MIDI Groove overview and metadata*

**Playhead Indicator** indicates the playhead location in the MIDI Groove overview when auditioning a groove.

**Groove Name and Original Tempo** Displays the name of the groove and its original tempo (in BPM).

**Feel** Displays the rhythmic feel of the groove.

**Meter** Displays the meter of the groove.

**Tempo** Displays the current playback tempo as set in your DAW.

**Duration** Displays the duration of the groove in bars.

## Auditioning Grooves

You can audition any of DrumCore’s grooves before importing them into your DAW.

To audition a groove:

- 1 Select the groove you want to audition in the Results list.
- 2 Click the Play button in the DrumCore plug-in window. The audio or MIDI groove plays back at the current tempo as set in your DAW (host tempo).



*Groove audition controls*

- 3 Select other grooves in the Grooves list to audition them.
- 4 Click the Play button again to stop auditioning the selected groove.

### Queue Play Mode

The Queue Play Mode toggle enables (or disables) Queue Play mode. When Queue Play mode is enabled, you can select a second groove to start playback as soon as the currently selected groove finishes playing. When Queue Play mode is disabled, any newly selected groove begins playing immediately, cutting off playback of the previously selected groove.

## Filtering Grooves

You can filter grooves shown in the Grooves list by feel. This can help you find the right groove with the right rhythmic feel quickly and easily.

To filter what grooves are shown in the Grooves list:

- Click the Show pop-up menu and select the rhythmic feel you want.



*Show pop-up menu*

Only grooves with the matching Feel metadata are shown in the Results list. Select “All” to show all grooves regardless of feel.

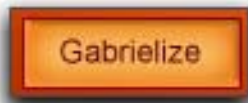
---

## Gabrielizer

DrumCore’s Gabrielizer provide a powerful tool for creating new rhythms from existing audio and MIDI grooves. One click of the Gabrielize button and DrumCore intelligently shuffles beats to come up with completely new and exciting rhythms.

To “Gabrielize” a groove:

- 1 Conduct a search according to your desired criteria.
- 2 Select an audio or MIDI file from the Results list.
- 3 Click the Gabrielize button.



*Gabrielize button*

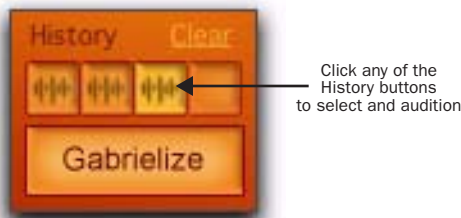
The rhythmic pattern of the selected audio or MIDI file will be reshuffled, or “Gabrielized.”

## History

The Gabrielizer provides a history of the last four Gabrielized grooves. As soon as you Gabrielize a fifth time, the first item in the history is overwritten. The Gabrielizer History will continue to cycle through the four slots each time you Gabrielize a groove.

To select any of the last four Gabrielized grooves:

- Click any one of the four history buttons.



*Gabrielizer section*

History buttons display a waveform if they contain a Gabrielized audio groove and a MIDI pattern if they contain a Gabrielized MIDI groove.



*Gabrielizer section, audio and MIDI*

## Clearing a Gabrielized File

If you Gabrielize a file and decide the result is not really what you want, you can clear the Gabrielized file and return to the original file. Note that the entire Gabrielize History will be cleared.

To clear the Gabrielize history:

- Click the Clear link above the Gabrielize History.



*Gabrielizer section*

## Exporting Audio and MIDI

Once you have found the groove you want, or created a new one using the Gabrielizer, you will probably want to export it for use in your DAW. DrumCore's export behavior depends on the settings in DrumCore's Settings page (see Chapter , "Chapter 5: DrumCore Settings").

DrumCore supports drag and drop for export of audio and MIDI files. Simply drag and drop a file from the Results list to the desktop or to an application that supports drag and drop for import, such as Pro Tools, Live, Cubase, Sonar, Logic, or Digital Performer. When dragging and dropping to your DAW, DrumCore will first export the file to the default export location (as specified in the DrumCore Settings).

Files are exported in the file format, sample rate, and bit-depth specified in the DrumCore Settings (see Chapter , "Chapter 5: DrumCore Settings").

Exported files include the tempo at beginning of file name. For example, if you export a file at 92 bpm, the exported file is named "092<file-name>." If the tempo is not already part of the file name, DrumCore adds it automatically. However, REX and ACID files will always have their own native tempo, which may not correspond to the selected tempo in DrumCore. Consequently, DrumCore does not prepend the tempo to REX and ACID file names.

**To export an audio or MIDI file from DrumCore to your DAW:**

- 1 Set the DrumCore export settings as desired (see Chapter , "Chapter 5: DrumCore Settings").
- 2 Search for and select the desired file in the Results list.
- 3 Drag and drop the groove from the Results list or from the Audio/MIDI Groove overview to your DAW (see Figure 1).

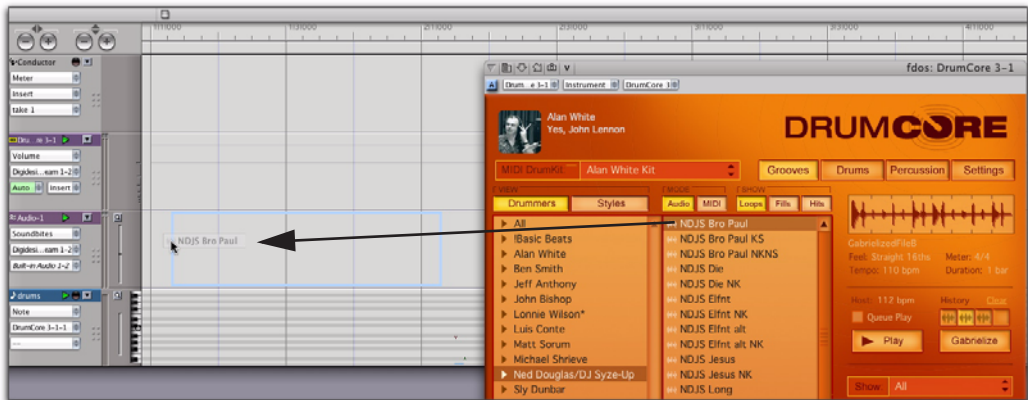


Figure 1. Drag and drop from DrumCore to Digital Performer

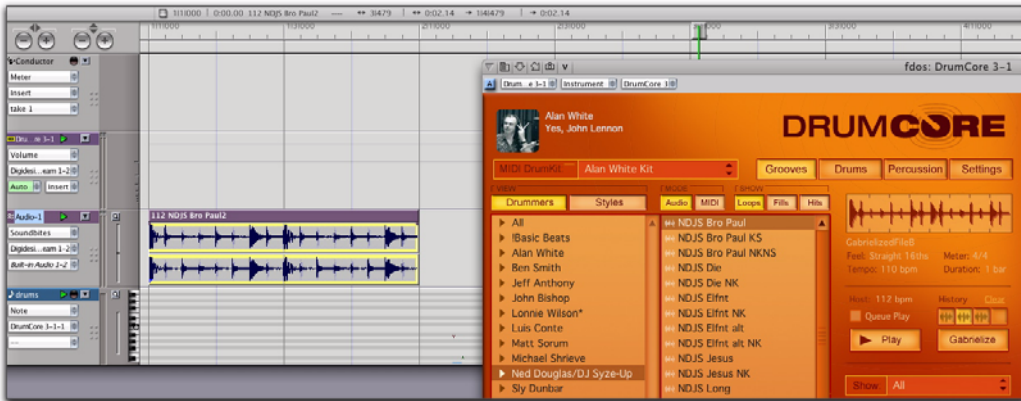


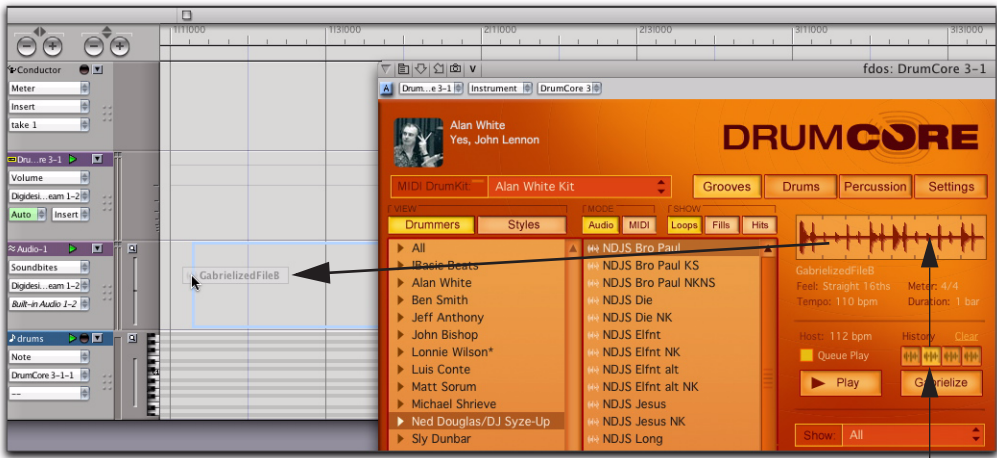
Figure 2. Result of drag and drop from DrumCore to Digital Performer

## Exporting Gabrielized Files

If you have Gabrielized a groove that you want to use in your DAW, you can easily drag and drop it from the file overview (but *not* from the Results list!).

To export a Gabrielized audio or MIDI file from DrumCore to your DAW:

- 1 Set the DrumCore export settings as desired (see Chapter , “Chapter 5: DrumCore Settings”).
- 2 Search for and select the desired file in the Results list.
- 3 Gabrielize the groove until you come up with something you like.
- 4 Drag and drop the groove from the Audio/MIDI Groove overview (*not* the Results list) to your DAW (see Figure 3 on page 19).



Selected Gabrielized Groove displayed in the Waveform Overview

Figure 3. Drag and drop a Gabrielized groove from DrumCore to Digital Performer






# Chapter 4: MIDI DrumKits

In addition to its extensive library of audio loops and fills by some of the world's best drummers, DrumCore provides a MIDI drum module with multiple sampled kits of the same Drummers. DrumCore's MIDI groove library plays these kits by default. In addition to using DrumCore's "factory" DrumKits, you can edit them or even create your own custom kits.

DrumCore's DrumKits were created by the original drummer's strikes using the same or similar drums used in their audio loops. DrumKits have been optimized to work with various drummer's MIDI grooves (included in their respective User Packs). Be sure to select the corresponding DrumKit to match a drummer's MIDI grooves. You can also try switching kits for some interesting variations (such as playing Tony Braunagel's Vintage kit with one of Sly Dunbar's MIDI grooves).


You can play DrumCore's MIDI DrumKits using MIDI sequences in your DAW. You can also play DrumCore's MIDI Drum module with an external MIDI controller routed through your DAW. You can also assign DrumCore's DrumKits to multiple output assignments for independent mixing and audio processing in your DAW.

 You can create your own custom DrumKits using DrumCore Toolkit. For more information, see the DrumCore Toolkit Guide.

---

## DrumKits

In addition to using DrumCore's MIDI DrumKits to audition MIDI grooves from DrumCore's database, you can also play DrumCore's MIDI DrumKits with your DAW using sequenced MIDI data or in real-time by routing an external MIDI controller through your DAW to DrumCore. DrumCore uses the standard General MIDI (GM) note numbers for drum mapping.

 For more information about configuring MIDI, MIDI routing, and playing virtual instrument plug-ins in your DAW, consult the manufacturer's documentation.

To select a MIDI DrumKit:

- Select the desired Kit from the MIDI DrumKit selector.



DrumKit selector

MIDI DrumKit selector

DrumCore loads the samples for the selected Kit into RAM, so, depending on the speed of your CPU and your RAM, this can take several seconds. As soon as you switch Kits, DrumCore purges the previous kit from RAM and loads the new one.

DrumCore indicates that a DrumKit is loading into RAM by a progress bar that appears in the Drum Kit selector.



*It is recommended that you do not play DrumCore while a new Kit is loading into RAM.*

## DrumCore Pads

The DrumCore plug-in window displays the “pad” assignments for the selected kit as Pad Settings and Global Pad Settings.

There are two pages of pads:

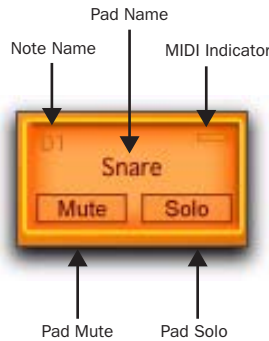
- Drums (MIDI note numbers 35-58)
- Percussion (MIDI note numbers 59-82).

Click either the Drums or Percussion tabs to display the corresponding set of Pads.



*DrumCore Drums page*

Each Pad represents a specific drum or sound in the kit. Each Pad displays the note name that triggers the Pad, the Pad name, a MIDI indicator, and Mute and Solo buttons for the Pad. The MIDI indicator lights when it receives the corresponding MIDI note.



*Snare Pad*

To select an individual Pad:

- Click any Pad to select it.



*Depending on your DAW, you can use the Up, Down, Left, and Right Arrow keys to select the corresponding adjacent Pad.*

To play an individual Pad:

- Play any Pad by clicking it.

- or -

- Play the corresponding MIDI note on your MIDI controller.

The Pad’s MIDI indicator lights when it receives MIDI.

To mute or unmute an individual Pad:

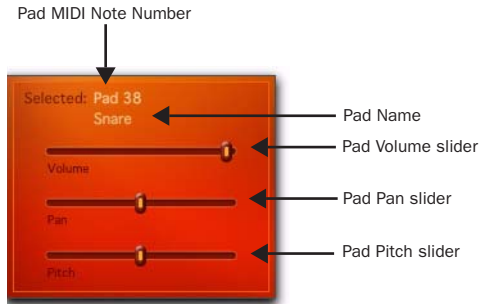
- Click the Pad’s Mute button.

To solo or unsolo an individual Pad:

- Click the Pad’s Solo button.

## Pad Settings

You can attenuate the volume, adjust the pan, and change the pitch of any selected Pad.



*Pad Settings*



Changes to Pad Settings can be saved as plug-in presets in AU, RTAS, and VST formats.

**To adjust the volume of a Pad:**

- 1 Select the desired Pad.
- 2 In the Pad Settings pane, move the Pad Volume slider to the left to lower the pad volume, or to the right to raise the pad volume.

**To adjust the panning of a Pad:**

- 1 Select the desired Pad.
- 2 In the Pad Settings pane, move the Pad Pan slider to the left to pan left, or to the right to pan right.

Panning to a stereo output pans between the left and right output channels. Panning to a mono output mixes between the left and right channels of stereo DrumCore samples.

**To change the pitch of a Pad:**

- 1 Select the desired Pad.
- 2 In the Pad Settings pane, move the Pad Pitch slider to the left to lower the pitch, or to the right to raise the pitch.

## Pad Swapping

You can quickly and easily swap pads between different Kits. For example, let's say you want to use Terry Bozzio's snare in one of Alan White's kits, simply Right-click the snare pad in Alan White's kit and select Terry Bozzio's snare.

**To swap a Pad from another Kit:**

- 1 Select the Kit you want to start with.
- 2 Right-click the Pad you want to swap out.



*On Mac, Ctrl-click any pad for the Replace With pop-up menu.*

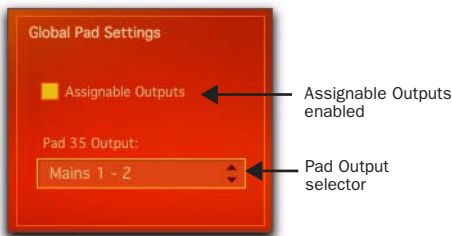
- 3 From the Replace With pop-up menu, select the Kit whose pad you want to use.



*Right-clicking a Pad to select from a different Kit.*

## Global Pad Settings

You can assign DrumCore's drum pads to multiple unique audio output channels for independent mixing and audio processing in your DAW. DrumCore provides 8 stereo output channels (1-2 through 15-16) and an additional 8 mono output channels (channels 17-24). Pad output assignments are applied by pad number across all kits. Also note that how DrumCore's output channel assignment appear as inputs varies between different DAW applications.



*Global Pad Settings*



Changes to Pad Output Assignments can be saved as plug-in presets in AU, RTAS, and VST formats. See "Saving Kits as Presets" on page 25.

To assign DrumCore to multiple outputs:

- 1 In the DrumCore Plug-in window, enable the Assignable Outputs option in the Global Pad Settings pane.
- 2 Select the Pad whose output you want to assign.
- 3 From the Pad Output selector, select the desired output assignment (e.g., KC 17).
- 4 Repeat the preceding steps for each additional Pad as desired.

To assign DrumCore outputs to channel inputs in your DAW:

- DrumCore outputs are routed to audio inputs in your DAW according to how your DAW manages virtual instrument plug-ins with multiple outputs.



*Consult the manufacturer's documentation for your DAW for information on routing multiple outputs from an instrument plug-in to individual tracks in your DAW for mixing and processing.*

*For examples of routing DrumCore outputs in different DAWs, see "Chapter ."*

## Dynamics

DrumCore provides VU Meters and a Volume slider to monitor and control the master volume. You can also adjust the amount of dynamic variation using the LiveDrummer slider.



*DrumCore Volume and VU Meters*

### Volume

To adjust DrumCore's Kit Volume:

- Move the Volume slider to the right to boost the Kit volume.  
- or -
- Move the Volume slider to the left to attenuate the Kit Volume.

## LiveDrummer

Whether you are programming your own MIDI drum patterns or using DrumCore's MIDI grooves, you can use the LiveDrummer slider to add a little variety to the sound. The LiveDrummer slider affects both the velocities and the samples used for each event. For example, if you add a series of MIDI notes that are all at the same velocity to play a hi-hat pad, you can adjust the LiveDrummer slider to breathe a little life into it. Experiment with this setting to find just the right feel for your MIDI grooves and drum patterns.

---

## Saving Kits as Presets

Once you have edited DrumCore's Pad Settings and Global Pad Settings, you will probably want to save your changes. Use your DAW's plug-in settings or plug-in presets feature to save the changes you have made. For information on how to save and manage plug-in presets in your DAW, consult the manufacturer's documentation.



# Chapter 5: DrumCore Settings

The DrumCore Settings tab in the DrumCore Plug-in lets you set the DrumCore Data location, set the location for exported DrumCore content, set the format for exported content, create custom default settings, and provides access to the About and Registration windows.



*DrumCore Settings*

---

## DrumCore Data Location

DrumCore expects the DrumCore Data folder to be in the location where it was originally installed. If you move the DrumCore Data folder to a different location, you will have to tell DrumCore where to find it.

To change the DrumCore Data location:

- 1 Click the Settings tab. By default, the Use DrumCore Data Folder option is enabled.
- 2 Click the Change button for the DrumCore Data Location.
- 3 In the resulting dialog, navigate to the location of the DrumCore Data folder.
- 4 Select the folder and click Choose.

---

## Export Location

When dragging and dropping a file to a DAW, the file is converted to the export format, written as a new file to the specified export location, and then imported into your DAW. The default folder for exported content is \DrumCore Data\Exported-Content\. You can change the default location (folder) for exported content in the DrumCore Settings.

To change the DrumCore Export location:

- 1 Click the Settings tab.
- 2 Click the Change button for the Export Location.
- 3 In the resulting dialog, navigate to the location where you want to save exported files.
- 4 Select the folder and click Choose.



*Set the Export Location to your DAW project's audio files folder. This lets you easily manage audio files exported from DrumCore that are specific to the project.*

---

## Export Format

The Export Format settings let you specify the settings for exported content. Typically, your DAW will convert files that don't match the file format, sample rate, and bit depth on import. You can set DrumCore to export content to the same file format, sample rate, and bit depth so that no conversion is necessary.

Select the appropriate File Type, Sample Rate, and Sample Format (bit depth) for your project:

**REC/ACID** Enable the REX/ACID export option to have DrumCore export REX or ACID files whenever they are available. All of DrumCore's factory content can be exported as REX files, or as AIFF, SD II, or WAVE files.

If you have imported ACID files, they can be exported as ACID files, or as AIFF, SD II, or WAVE files.

If the REX or ACID format is not available, DrumCore will export the file as the format selected in the pop-up menu (AIFF, SD II, or WAVE).

**File Type** AIFF, Sound Designer II, Sound Designer II Split .L/.R, or WAVE.



*The Sound Designer II file format is only supported on Macintosh.*

**Sample Rate** 44.1 kHz, 48 kHz, 88.2 kHz, 96 kHz, 176.4 kHz, or 192 kHz.

**Sample Format** 16- or 24-bit.



*You should set the Sample Rate and Sample Format (bit depth) to the same sample rate and bit depth as your host application. For example, if your Pro Tools session is 96 kHz and 24-bit, you should set DrumCore to 96 kHz and 24-bit as well.*



*DrumCore factory content is all 24-bit, 48 kHz, and is encoded in DrumCore's proprietary file format.*



---

## Default Settings

You can change DrumCore's default settings so that your custom settings are used as the default settings each time a new instance of DrumCore is used in your DAW.

To save the current settings as the default DrumCore settings:

- 1 Configure the DrumCore settings as desired.
- 2 Click the Save As Default Settings button.

---

## About

Click the About button to access the About DrumCore window. Here you will see information about trademarks, credits, and the version number.

---

## Register

If you are using DrumCore in the unregistered demo mode, click the Register button to register and authorize your copy of DrumCore.

To register DrumCore:

- 1 Select the Settings tab.
- 2 Click the Register button.
- 3 In the Register DrumCore dialog, enter your Name and Serial Number if necessary.
- 4 Click the Generate Challenge Code button.
- 5 Click the link to register DrumCore.
- 6 Enter the response code you receive into the Response Code field in the Register DrumCore dialog.
- 7 Click Authorize.



# Chapter 5: Using DrumCore with your DAW

Every Digital Audio Workstation (DAW) is a little different in how it manages virtual instrument plug-ins—including how MIDI is routed to the plug-in and how audio is routed from the plug-in through the DAW’s mixer. For the most accurate and up to date information on using virtual instrument plug-ins, like DrumCore, consult the documentation for your DAW. However, this section does provide a few examples: using DrumCore with Pro Tools, Ableton Live, Digital Performer, Cubase, Logic, Acid, and Sonar.



Please consult the manufacturer’s documentation for your DAW for the most current and up-to-date information about using Virtual Instrument (AU, RTAS, and VST) plug-ins with your DAW.

---

## Using DrumCore with Ableton Live

DrumCore integrates seamlessly with Ableton Live as an Audio Units (AU) or VST plug-in.

### Configuring DrumCore for Live

To use DrumCore with Live, you will want to configure the DrumCore settings accordingly.

**To configure the DrumCore settings for Live:**

- 1 Launch Ableton Live.
- 2 Drag and drop the DrumCore Plug-in Device from Live’s Plug-in Browser pane to a MIDI track.

- 3 Click the Settings button in the DrumCore plug-in window to view the DrumCore Settings page.

- 4 Set the Export File Format options to match the File Type, Sample Rate, and Sample Format (bit depth) of your Live Set (e.g., AIFF, 44.1 kHz, 24-bit). Exported content is written to the folder specified in the Export Location settings (see “Export Location” on page 28). The default folder is:

`/DrumCore Data/ExportedContent/`

### Hearing DrumCore in Live

You can hear DrumCore in Live simply by starting playback in the Live Plug-in window.

**To hear DrumCore in Live:**

- 1 Launch Live and open an existing Live Set or create a new one.
- 2 In Live, create a new or use an existing MIDI track.
- 3 Search for the desired groove.
- 4 Adjust the level of DrumCore in Live.
- 5 Click the Play button in the DrumCore Plug-in window.

If DrumCore is currently playing back an audio or MIDI file, you will hear it playing back through Live.

## Drag and Drop Audio and MIDI to Live

You can easily drag and drop audio (hits, loops, or fills) or MIDI files from Live's Results list or Audio Waveform/MIDI Sequence Overview into the Arrange view. In this way you can quickly and easily compose complete, professional rhythm parts for a whole song or to just work with a scratch track to come up with new ideas.



Figure 1. Dragging and dropping a DrumCore audio groove to a Live audio track in Arrangement View



Figure 2. Dragging and dropping a DrumCore audio groove to an audio clip on a Live audio track in Session View



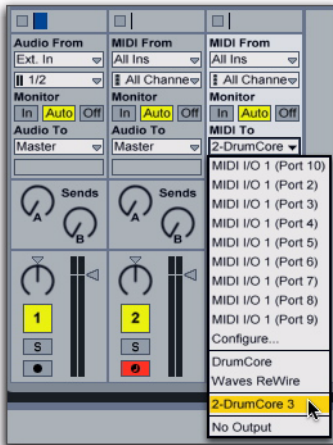
Figure 3. Dragging and dropping a DrumCore MIDI groove to a MIDI clip on a Live MIDI track in Session View

## Playing DrumCore's MIDI Drum Module with Live

DrumCore's MIDI Drum module can be played directly from Live, and monitored in Live. This gives you access to DrumCore's world-class sampled DrumKits, while providing you with the flexibility of being able to do your own drum programming in Live.

To play the DrumCore MIDI Drum module with Live:

- 1 Launch Live and open an existing Live Set or create a new one.
- 2 Configure Live to monitor DrumCore (see "Hearing DrumCore in Live" on page 31).
- 3 In the DrumCore Plug-in window, select the desired DrumKit from the DrumKit menu (see "DrumKits" on page 21).
- 4 Create one or more new MIDI tracks (or use existing MIDI tracks) and select DrumCore as the destination from the MIDI To pop-up menu.



Selecting DrumCore as the MIDI To destination

Any MIDI data from the assigned tracks will play the currently selected DrumKit in DrumCore.

## Recording DrumCore in Live

You may want to record DrumCore in Live to take advantage of the mixing, processing, and editing capabilities of Live as you continue to work on your set.

To record DrumCore to an audio track in Live:

- 1 Launch Live and open an existing Live Set or create a new one.
- 2 Configure Live to monitor DrumCore (see "Hearing DrumCore in Live" on page 31).
- 3 In Live, record enable an Audio track with DrumCore as the assigned input.
- 4 Use the Live Transport to begin recording.



Recording DrumCore in Live, Session View



Recording DrumCore in Live, Arrangement View

5 In Live, click the Stop button in the Transport or press the Spacebar when you want to stop recording.

## Configuring Live to Monitor Multiple Outs from DrumCore

To route DrumCore outputs to multiple audio tracks in Live for independent mixing and processing:

- 1 In your Live set, create a new MIDI track.
- 2 Drag and drop the DrumCore plug-in from the Plug-in Device Browser to the MIDI track.
- 3 In the DrumCore plug-in window, assign different pads to different DrumCore output channels (see “Global Pad Settings” on page 24).

For example, select the Kick 1 pad and assign it to DrumCore Output “Mono 17,” the snare pads to “Mono 18,” and the high hat pads to “Mono 19.”

- 4 In Live, create 3 new audio tracks.

5 For the first new audio track, select Audio From > DrumCore 3.



6 From the track's Input Channel selector, select DC 17-DrumCore 3.



7 Set the remaining audio track inputs to DC 18-DrumCore 3 and DC 19-DrumCore 3 respectively.

You can now mix and process outputs 17, 18, and 19 from DrumCore independently using mix automation and plug-ins on the audio tracks.



To play the DrumCore plug-in in Live, import DrumCore MIDI content into your Live set, play your external MIDI controller, or create your own MIDI drum sequence.

Figure 4 shows an example of a Live set with DrumCore inserted on a MIDI track, and with the Kick, Snare, and High-Hat Pads assigned to separate outputs for individual mixing and processing on separate audio tracks.



Figure 4. Example of a Live set with different DrumCore Pads assigned to different outputs



---

## Using DrumCore with Cubase

DrumCore integrates seamlessly with Steinberg's Cubase (and Nuendo too!) as a VST virtual instrument plug-in. This gives you access to DrumCore's world-class audio and MIDI grooves, and sampled DrumKits, while providing you with the flexibility of being able to do your own editing, arranging, and drum programming in Cubase.

## Configuring Cubase with DrumCore

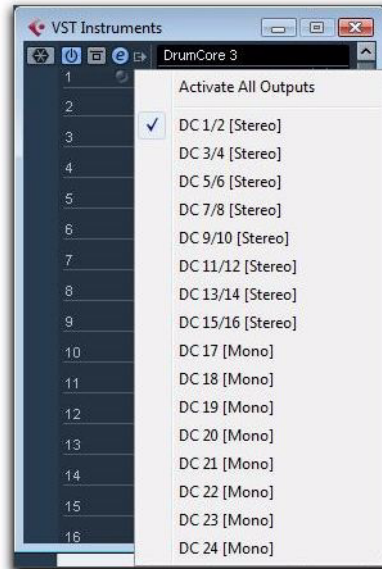
To play DrumCore in your Cubase Project:

- 1 Launch Cubase and open an existing project or create a new project.
- 2 Create a new Instrument track by going to the Devices menu and selecting VST Instruments.
- 3 In the VST Instruments window, select DrumCore as the VST Instrument.



4 When prompted to create a new MIDI track assigned to DrumCore, click Create.

5 Choose the Output Activation list for DrumCore in the VST Instruments rack and select however many separate outputs you want to use. This will create multiple audio tracks in Cubase.



6 Assign the outputs for pads in DrumCore that corresponding to each audio track in Cubase accordingly (see Figure 5 on page 38).



Figure 5. Assigning the Kick pad output in DrumCore

## Configuring DrumCore Settings for Cubase

To use DrumCore with Cubase, you will want to configure the DrumCore settings accordingly.

To configure the DrumCore settings for Cubase:

- In the DrumCore Settings page, set the Export File Format options to match the File Type, Sample Rate, and Sample Format of your Cubase session (e.g., AIFF, 44.1 kHz, 24-bit). If the File Type, Sample Rate, or Sample Format doesn't match your Cubase session, Cubase can copy and convert the files to match.



When importing a file into Cubase, the Import Options dialog opens. The Import Options dialog include options to copy a file to the Working Directory, convert to project sample rate, bit depth, etc. These are options Cubase and Nuendo that you can set based on your needs. They do not directly affect audio export from DrumCore.

## Drag and Drop Audio and MIDI to Cubase

You can simply drag and drop audio or MIDI files directly from DrumCore to Cubase.

To drag and drop from DrumCore to Cubase:

- Click and drag an audio or MIDI file from DrumCore's Results list and drop it to an audio or MIDI track in Cubase. You can also drag and drop audio grooves from DrumCore to the Pool window in Cubase.



*MIDI files must be dropped on a MIDI track. Audio files must be dropped on an audio track. If you drag onto a blank space that has no track assigned, the correct track type (audio or MIDI) will be created.*

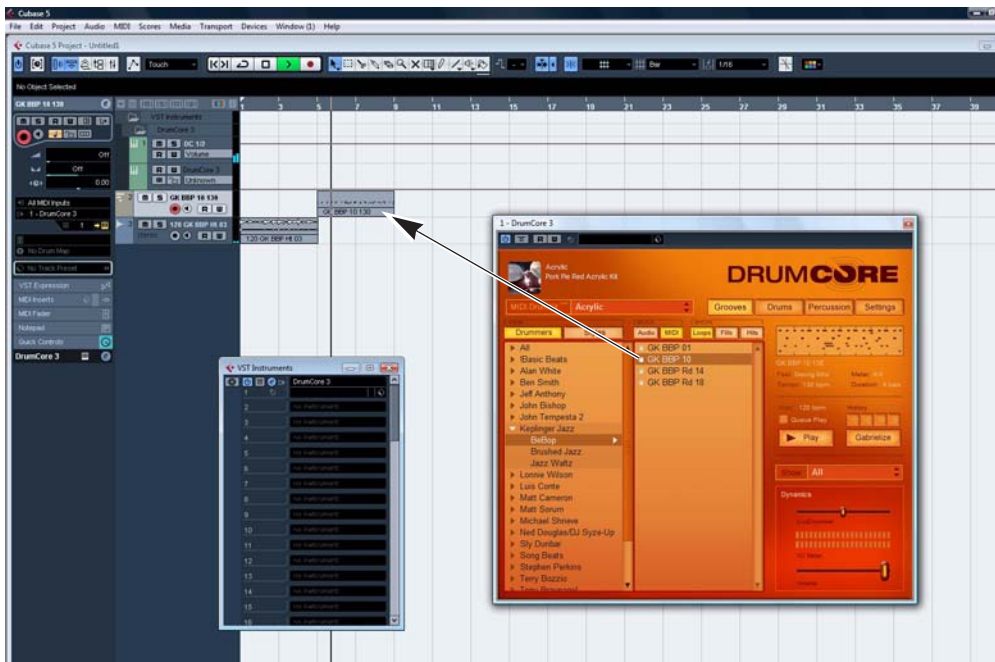


Figure 6. Dragging and dropping a MIDI groove into Cubase

## Playing DrumCore's MIDI Drum Module with Cubase

DrumCore's MIDI Drum module can be played directly from Cubase, and monitored in Cubase. This gives you access to DrumCore's world-class sampled DrumKits, while providing you with the flexibility of being able to do your own drum programming in Cubase.

### To play the DrumCore MIDI Drum module with Cubase:

- 1** Launch Cubase and open an existing project or create a new project.
- 2** Configure Cubase to monitor DrumCore (see "Configuring Cubase with DrumCore" on page 37). Use multiple tracks for multiple outputs from DrumCore if desired (see "Global Pad Settings" on page 24).
- 3** Select the desired DrumKit from the DrumKit menu (see "DrumKits" on page 21).
- 4** In Cubase, create one or more new MIDI tracks (or use existing MIDI tracks).
- 5** Select DrumCore as the output of the selected MIDI track.

Any MIDI data from the assigned tracks will play the currently selected DrumKit in DrumCore.

## Recording DrumCore in Cubase

You may want to record DrumCore in Cubase to take advantage of the mixing, processing, and editing capabilities of Cubase as you continue to work on your project.

### To record DrumCore to an audio track in Cubase:

- 1** Solo the DrumCore track (also solo any MIDI tracks you may be using to play DrumCore's MIDI Drum module).
- 2** Select File > Export > Audio Mixdown.
- 3** In the resulting Export Audio Mixdown dialog, select the following:
  - location where the file will be saved
  - sample rate.
  - bit depth
  - number of channels (e.g., mono, stereo, etc.)
- 4** You can also select the Import to Pool and Import to Audio Track option to automatically re-import the audio to the Pool or a new audio track respectively.
- 5** Click Save.

---

## Using DrumCore with Digital Performer

(Macintosh Only)

DrumCore integrates seamlessly with Mark of the Unicorn's Digital Performer (version 4.0 or later) as an Audio Units virtual instrument plug-in.

### Configuring DrumCore for Digital Performer

To use DrumCore with Digital Performer, you will want to configure the DrumCore settings accordingly.

To configure the DrumCore settings for Digital Performer:

- 1 Launch Digital Performer.
- 2 Add DrumCore 3 as an Instrument track.
- 3 Click the Settings button in the DrumCore plug-in window to view the DrumCore Settings page.
- 4 Set the Export File Format options to match the File Type, Sample Rate, and Sample Format (bit depth) of your project (e.g., AIFF, 44.1 kHz, 24-bit). Exported content is written to the folder specified in the Export Location settings (see "Export Location" on page 28). The default folder is:  
/DrumCore Data/ExportedContent/

## Hearing DrumCore in Digital Performer

You can hear DrumCore in Digital Performer simply by adding it as an Instrument track.

To hear DrumCore in Digital Performer:

- 1 Launch Digital Performer and open an existing project or create a new project.
- 2 In Digital Performer, create a new stereo Instrument track. Be sure that the new track has a valid output assignment.
- 3 Search for and audition the desired audio or MIDI groove.
- 4 In Digital Performer, adjust the track's volume to the desired level for playback.

If DrumCore is currently playing back an audio or MIDI file, you will hear it playing back through Digital Performer.

## Recording DrumCore in Digital Performer

You can record DrumCore's audio output right into Digital Performer, whether you are playing an audio file or DrumCore's DrumKit via MIDI.

To record DrumCore in Digital Performer:

- 1 Launch Digital Performer and open an existing project or create a new project.
- 2 In Digital Performer, add a new stereo Instrument track with DrumCore.

3 Add a new audio track.

4 Select DrumCore for the Input to the new audio track.

5 Record enable the new audio track and start recording in Digital Performer.

Digital Performer will record the audio output from DrumCore in real-time.



Figure 7. Recording the main audio output of DrumCore in Digital Performer

## Drag and Drop Audio and MIDI to Digital Performer

You can easily drag and drop an audio (hits, loops, or fills) or MIDI files from DrumCore's Results list or Audio Waveform/MIDI Sequence Overview to Digital Performer's Timeline or Soundbites window. This gives you the flexibility to arrange audio and MIDI files from DrumCore's extensive database in Digital Performer any way you want. It's a great way to quickly and easily compose complete, professional rhythm parts for a whole song or to just work with a scratch track to come up with new ideas.

When dragging and dropping audio or MIDI groove from DrumCore, Digital Performer will place the groove in the target track.

## Exporting Audio to Digital Performer

You can export an audio file (loop, fill, or hit) from DrumCore right into Digital Performer's Soundbites window. This gives you the flexibility to arrange audio files from DrumCore's extensive database in Digital Performer any way you want.

It's a great way to quickly and easily compose complete, professional rhythm parts for a whole song or to just work with a scratch track to come up with new ideas.

You can also simply drag and drop audio loops, fills, or hits right from the DrumCore Results list to Digital Performer's Timeline or Soundbites window.

### To export audio to Digital Performer:

- 1 Launch Digital Performer and open an existing project or create a new project.
- 2 In Digital Performer, add a new Instrument track with DrumCore. Be sure that the new track has a valid output assignment.
- 3 In DrumCore, search for the desired audio groove.
- 4 Drag and drop the selected audio groove to the Sound Bites window or to the Tracks or Sequence window.

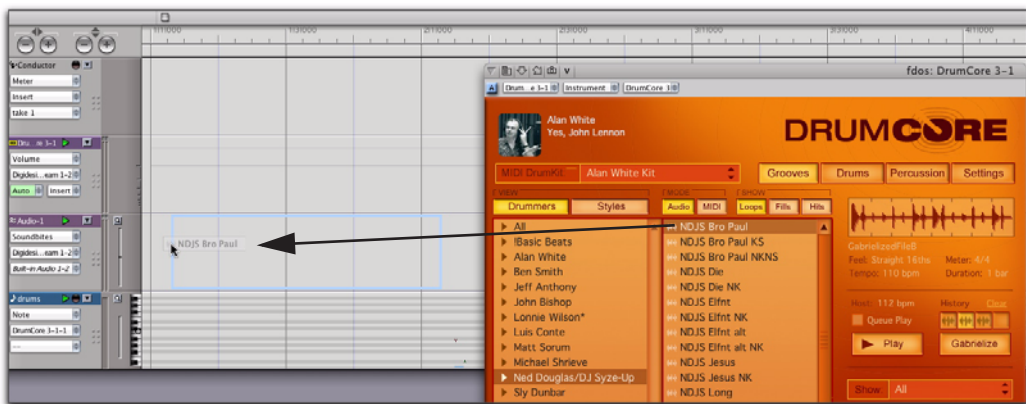


Figure 8. Drag and drop from DrumCore to Digital Performer



## Exporting MIDI to Digital Performer

Drag and drop MIDI files from DrumCore to Digital Performer.

To export MIDI to Digital Performer:

- 1 Launch Digital Performer and open an existing project or create a new project.
- 2 Configure Digital Performer for monitoring DrumCore (see “Hearing DrumCore in Digital Performer” on page 41).

3 In DrumCore, search for and select the desired MIDI groove.

4 Drag and drop the desired MIDI groove from DrumCore to Digital Performer (see Figure 9 on page 44).

You can now use the MIDI sequence from DrumCore verbatim, or edit to suit your needs.

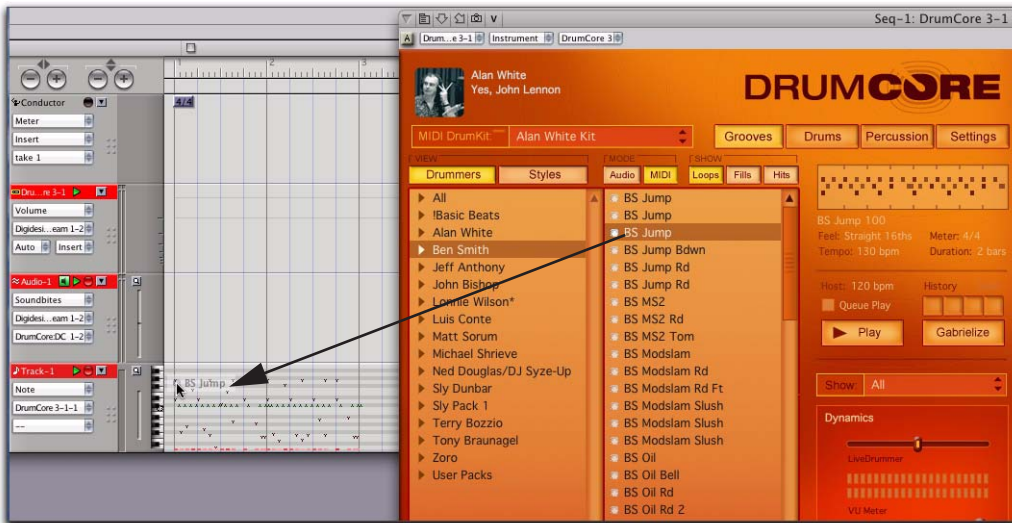


Figure 9. Drag and drop MIDI from DrumCore to Digital Performer



## Playing DrumCore's MIDI Drum Module with Digital Performer

DrumCore's MIDI Drum module can be played directly from Digital Performer MIDI tracks, and monitored and recorded in Digital Performer. This gives you access to DrumCore's world-class sampled DrumKits, while providing you with the flexibility of being able to do your own drum programming in Digital Performer.

### To play the DrumCore MIDI Drum module with Digital Performer:

- 1 In your Digital Performer Project, create a new Instrument track with KitCore by selecting Project > Add Track > Instrument Track > DrumCore 3 (mono or stereo) [Submersible Music].
- 2 Create a new MIDI track by selecting Project > Add Track > MIDI Track.
- 3 From the MIDI track's Output menu, select DrumCore 3-1-1.
- 4 Import DrumCore MIDI content to the MIDI track (see "Drag and Drop Audio and MIDI to Digital Performer" on page 43), play (and record) your external MIDI controller, or create your own MIDI drum sequence to play DrumCore in Digital Performer.
- 5 Start playback in Digital Performer.



*To play the DrumCore plug-in in Digital Performer, import DrumCore MIDI content into your Digital Performer project (see "Drag and drop from DrumCore to Digital Performer" below), play your external MIDI controller, or create your own MIDI drum sequence.*

## Configuring Digital Performer to Monitor Multiple Outs from DrumCore

To route DrumCore outputs to multiple Aux tracks in Digital Performer for independent mixing and processing:

- 1 In your Digital Performer Project, create a new Instrument track with DrumCore by selecting Project > Add Track > Instrument Track > Submersible Music: DrumCore (mono or stereo).
- 2 Create a new MIDI track by selecting Project > Add Track > MIDI Track.
- 3 From the MIDI track's Output menu, select DrumCore 3-1 > DrumCore 3-1-1.
- 4 Import DrumCore MIDI content to the MIDI track (see "Drag and Drop Audio and MIDI to Digital Performer" on page 43), play your external MIDI controller, or create your own MIDI drum sequence to play DrumCore in Digital Performer.
- 5 In the DrumCore plug-in window, you can assign different pads to different DrumCore output channels (see "Global Pad Settings" on page 24).

For example, select the Kick 1 pad and assign it to DrumCore Output "Mono 17," the snare pads to "Mono 18," and the high hat pads to "Mono 19."

In Digital Performer, create a new Aux track by selecting Project > New Track > Aux Track.

- 6 From the Aux track's Input menu, select New Mono Bundle > DrumCore 3-1-17. (You may need to configure this in the Bundles window first.)
- 7 Repeat steps 5 through 7 to route additional DrumCore outputs to separate Aux tracks for mixing and processing.

You can now mix and process outputs 17, 18, and 19 from DrumCore independently using mix automation and plug-ins on the Aux tracks.


 To play the DrumCore plug-in in Digital Performer, import DrumCore MIDI content into your Digital Performer project, play your external MIDI controller, or create your own MIDI drum sequence.



Figure 10. Example of a Digital Performer project playing DrumCore

---

## Using DrumCore with Logic

(Macintosh Only)

DrumCore integrates seamlessly with Emagic's Logic as an Audio Units (AU) instrument plug-in. Logic can both send MIDI to DrumCore and receive audio back from DrumCore.

### Configuring Logic for DrumCore

To use DrumCore with Logic, simply insert DrumCore on an Instrument track. You can also create additional Audio, Aux, and MIDI tracks for playing and mixing DrumCore.

To configure Logic for DrumCore:

- 1 Launch Logic and open an existing project or create a new project.
- 2 Create a new Software Instrument track.
- 3 From the I/O Input selector, choose AU Instruments > Submersible Music > DrumCore 3 > Stereo.



Selecting DrumCore on a Software Instrument track


- 4 The DrumCore plug-in window opens.
- 5 You can create additional Audio and Aux tracks for recording and mixing DrumCore.
- 6 You can also create additional MIDI tracks for playing DrumCore.

## Configuring DrumCore for Logic

To use DrumCore with Logic, you will want to configure the DrumCore settings accordingly.

To configure the DrumCore settings for Logic:

- 1 Launch Logic.
- 2 Add an Instrument track and select DrumCore from the I/O Input selector.
- 3 Click the Settings button in the DrumCore plug-in window to view the DrumCore Settings page.
- 4 Set the Export File Format options to match the File Type, Sample Rate, and Sample Format (bit depth) of your Project (e.g., AIFF, 44.1 kHz, 24-bit).

 *Logic allows multiple sample rates in a project. Be sure to set DrumCore to match your Logic session because Logic does not warn you if the sample rate you are using doesn't match the project's sample rate. If the sample rates don't match and you export as AIFF or WAV, the DrumCore groove may not synchronize with Logic.*

- 5 Exported content is written to the folder specified in the Export Location settings (see "Export Location" on page 28). The default folder is:

`/DrumCore Data/ExportedContent/`

### Drag and Drop Audio and MIDI to Logic

You can simply drag and drop audio or MIDI files directly from DrumCore into Logic.

To drag and drop audio from DrumCore to Logic:

- Click and drag an audio or MIDI file from the DrumCore Results list and drop it onto an audio or MIDI track in the Arrange window (see Figure 11 on page 48).

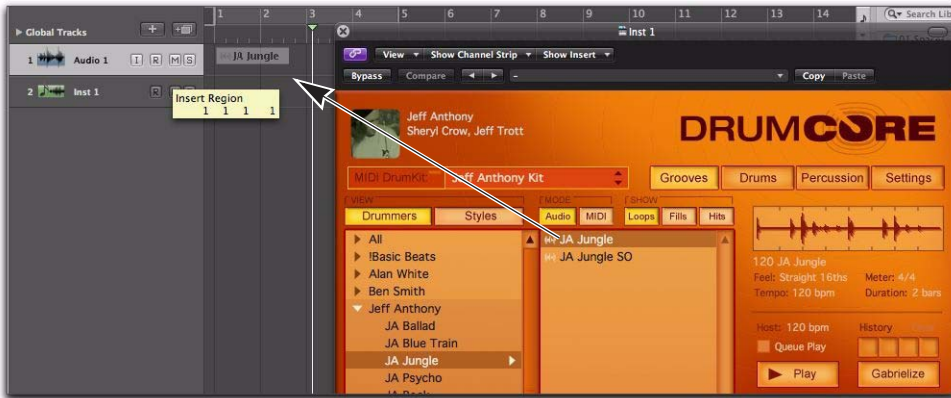


Figure 11. Dragging and dropping an audio groove from DrumCore into the Logic Arrange window

## Playing DrumCore's MIDI Drum Module with Logic

DrumCore's MIDI Drum module can be played directly from Logic MIDI tracks, and monitored in Logic. This gives you access to DrumCore's world-class sampled DrumKits, while providing you with the flexibility of being able to do your own drum programming in Logic.

To play the DrumCore MIDI Drum module with Logic:

- 1 Launch Logic and open an existing song or create a new song.
- 2 Create a new Software Instrument track with DrumCore.
- 3 Select the desired DrumKit from the DrumKit menu (see "DrumKits" on page 21).

4 Any MIDI data from the Software Instrument track will play the currently selected DrumKit in DrumCore.

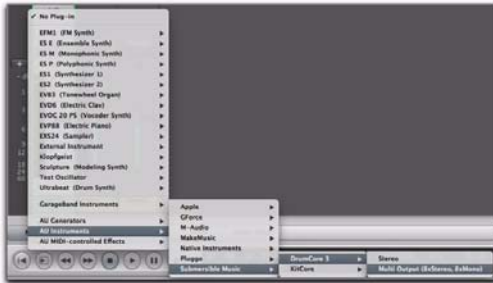


Logic playing back DrumCore's DrumKit and monitoring playback on multiple Aux Channel Strips

## Configuring Logic to Monitor Multiple Outs from DrumCore

To route DrumCore outputs to multiple Aux tracks in Logic for independent mixing and processing:

1 Insert DrumCore on the Instrument track as a multichannel plug-in rather than as a stereo plug-in.



*Inserting DrumCore as a multichannel instrument plug-in*

2 The DrumCore plug-in window opens.

3 Select Options > Create New Auxiliary Channel Strips in the Logic Mixer.



4 Type the number for however many separate channels you want to mix from DrumCore in Logic, set the Format (mono or stereo) and click Create.

5 Assign the outputs for pads in DrumCore as desired.

6 Set the Inputs for the Auxiliary Channel Strips to the desired DrumCore outputs.



*Assigning DrumCore outputs to Auxiliary Channel Strip inputs*

---

## Using DrumCore with Pro Tools

DrumCore integrates seamlessly with Digidesign's Pro Tools (both LE and TDM versions) as an RTAS plug-in. The Main audio output from DrumCore plays through the stereo or mono Pro Tools audio, Auxiliary Input, or Instrument track on which it is inserted.

## Configuring DrumCore for Pro Tools

To use DrumCore in your Pro Tools session, you will want to configure the DrumCore settings accordingly.

To configure DrumCore's settings for your Pro Tools session:

- 1 Launch Pro Tools.
- 2 Create a new stereo Instrument track.
- 3 Insert DrumCore on the new Instrument track.
- 4 Click the Settings button in the DrumCore plug-in window to view the DrumCore Settings page.
- 5 Set the Export File Format options to match the File Type, Sample Rate, and Sample Format (bit depth) of your Pro Tools session (e.g., AIFF, 44.1 kHz, 24-bit). Exported content is written to the folder specified in the Export Location settings (see "Export Location" on page 28). The default folder is:

`/DrumCore Data/ExportedContent/`

If the File Type, Sample Rate, or Sample Format doesn't match your Pro Tools session, Pro Tools will convert and copy (to the session's Audio Files folder) the files to match.

If the File Type, Sample Rate, and Sample Format all match your Pro Tools session, the exported file may not be copied to the session's Audio Files folder.

## Hearing DrumCore in Pro Tools

You can hear DrumCore in Pro Tools simply by selecting it as an RTAS plug-in on an Instrument, Auxiliary Input, or audio track.

To hear DrumCore in Pro Tools:

- 1 Launch Pro Tools and open an existing session or create a new session.
- 2 Create a new stereo or mono Instrument, Auxiliary Input, or audio track.
- 3 Select the DrumCore RTAS plug-in on the new track. The Plug-In window opens.
- 4 Adjust the track's volume fader to the desired level.

If DrumCore is currently playing back an audio or MIDI file, you will hear it playing back through Pro Tools.



*Recording DrumCore in the Pro Tools Mix window*



## Recording DrumCore in Pro Tools

You can record DrumCore's audio output right into Pro Tools, whether you are playing an audio file or DrumCore's DrumKit via MIDI.

To record DrumCore in Pro Tools:

- 1 Insert DrumCore as an RTAS plug-in on an Instrument, Auxiliary Input, or an audio track.
- 2 In DrumCore, search for the desired groove.
- 3 In Pro Tools, bus the output of the track with DrumCore to another audio track.
- 4 Record enable the audio track receiving the bussed signal and begin recording.



*Bus recording DrumCore in the Pro Tools*

Pro Tools will record the audio output from DrumCore in real-time.



*After recording DrumCore in Pro Tools, you may want to mute the track on which DrumCore inserted. Otherwise DrumCore will continue to play back in Pro Tools.*

## Drag and Drop Audio and MIDI to Pro Tools

(Pro Tools 7.0 or later only)

You can drag and drop audio or MIDI files directly from DrumCore to Pro Tools. Files dragged to the Timeline (or Tracks List) create a new track of the corresponding type (audio or MIDI) and width (mono or stereo), and the groove is spotted to the time line location where it is dropped. Files dragged to a track must match the track type (e.g., audio or MIDI) and width (e.g., mono or stereo). You can also drag and drop audio and MIDI grooves from DrumCore to the Region List.

To drag and drop from DrumCore to Pro Tools:

- Click and drag an audio or MIDI file from DrumCore's Results List (or Audio Waveform or MIDI Sequence Overview) and drop it onto the Pro Tools time line, to the Tracks List, to an existing track, or to the Regions List.



REX or ACID files dragged from DrumCore and dropped on the Pro Tools time line create tick-based audio tracks of the corresponding number of channels (mono or stereo). REX and ACID files appear in Pro Tools as Region Groups and are spotted to the time line location where they are dropped. In Pro Tools 7.4 or later, tick-based Elastic Audio-enabled tracks are created.

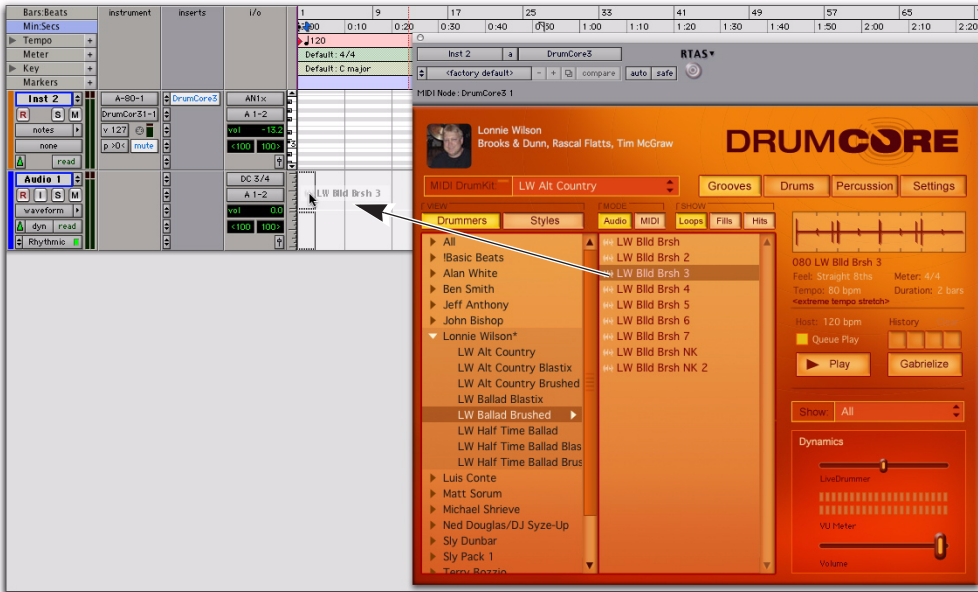


Figure 12. Dragging and dropping a DrumCore audio groove to a Pro Tools audio track

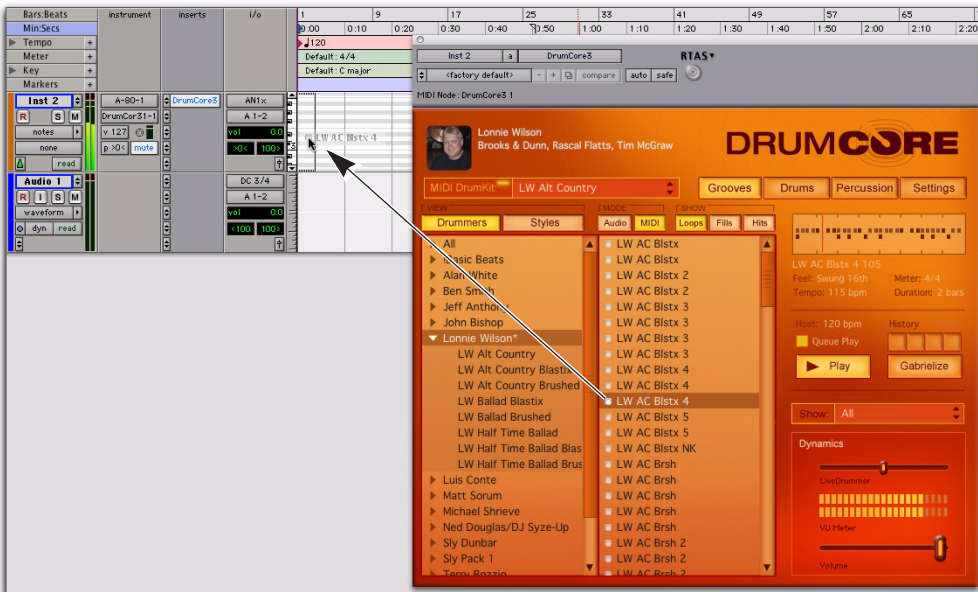


Figure 13. Dragging and dropping a DrumCore MIDI groove to a Pro Tools instrument track



## Playing DrumCore's MIDI Drum Module with Pro Tools

DrumCore's MIDI Drum module can be played directly from Pro Tools Instrument and MIDI tracks, and monitored and recorded in Pro Tools. This gives you access to DrumCore's world-class sampled DrumKits, while providing you with the flexibility of being able to do your own drum programming in Pro Tools.

### To play the DrumCore MIDI Drum module with Pro Tools:

- 1 Insert DrumCore as an RTAS plug-in on an Instrument, Auxiliary Input, or audio track. If using multiple outputs from DrumCore, use the corresponding number of inserts on stereo or mono tracks in Pro Tools.
- 2 Select the desired DrumKit from the DrumKit selector (see "DrumKits" on page 21).
- 3 In Pro Tools, create one or more new Instrument or MIDI tracks, or use existing Instrument or MIDI tracks (or even MIDI sequences imported from DrumCore).
- 4 Assign the Instrument or MIDI Track Output for each track to the DrumCore plug-in.

Any MIDI data from these tracks will now play the currently selected DrumKit in DrumCore.

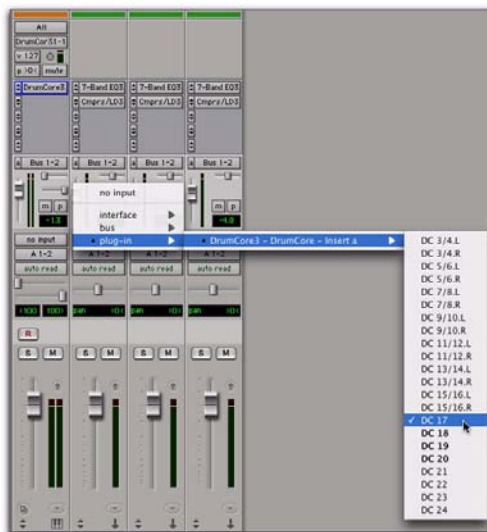
## Configuring Pro Tools to Monitor Multiple Outs from DrumCore

To route DrumCore outputs to multiple Pro Tools tracks for independent mixing and processing:

- 1 Create a new stereo Instrument track.
- 2 Insert the DrumCore RTAS plug-in on that track.
- 3 In the DrumCore plug-in window, assign different pads to different DrumCore output channels (see "Global Pad Settings" on page 24).

For example, select the Kick 1 pad and assign it to DrumCore Output "Mono 17," the snare pads to "Mono 18," and the high hat pads to "Mono 19."

- 4 In Pro Tools, create 3 new mono Auxiliary Input tracks.
- 5 For the first new Auxiliary Input track, select Plug-in > DrumCore > DC 17 from the track's Input selector.



- 6 Set the remaining Auxiliary Input tracks to DC 18 and DC 19 respectively.

You can now mix and process outputs 17, 18, and 19 from DrumCore independently using mix automation and plug-ins on the Auxiliary Input tracks.



To play the DrumCore plug-in in Pro Tools, import DrumCore MIDI content into your Pro Tools session (see “Drag and Drop Audio and MIDI to Pro Tools” on page 51), play your external MIDI controller, or create your own MIDI drum sequence.

Figure 14 on page 54 shows an example of a Pro Tools session with Drum inserted on an Instrument track, and with the Kick, Snare, High-Hat, and Ride Cymbal Pads of the DrumCore DrumKit assigned to separate outputs for individual mixing and processing on separate Auxiliary Input tracks.



Figure 14. Example of a Pro Tools session playing DrumCore’s DrumKit with different Pads assigned to different outputs

# Using DrumCore with Sonar

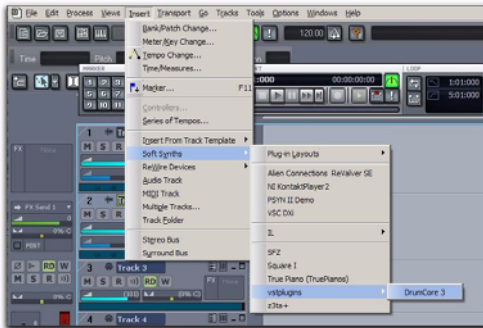
(Windows Only)

DrumCore integrates seamlessly with Cakewalk's Sonar as a VST instrument plug-in. Sonar can both send MIDI to DrumCore and receive audio back from DrumCore.

## Configuring Sonar with DrumCore

To play DrumCore in Sonar:

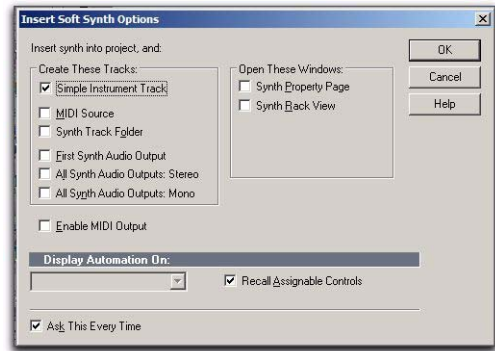
- 1 In Sonar, select Insert > Soft Synth > vstplugins > DrumCore.



- 2 Configure Sonar's Insert Options dialog as desired.



*If you select the All Synth Audio Outputs option in Sonar, one new MIDI track is created (to send MIDI out to DrumCore's MIDI instrument) and 16 stereo instrument audio input tracks (corresponding to DrumCore's 16 stereo audio outputs) are created. Only use this if you are using DrumCore as a MIDI instrument and you want to process individual drum instrument sounds*



- 3 Click OK. Sonar creates both a new stereo audio track and a new MIDI track.
- 4 In DrumCore, search for the desired groove.
- 5 Adjust the level of DrumCore in Sonar.

If DrumCore is currently playing back an audio or MIDI file, you will hear it playing back through Sonar.

You can also play DrumCore's DrumKits by routing MIDI from your external MIDI controller through the MIDI track that is assigned to DrumCore or by programming your own drum patterns on that MIDI track.

## Configuring DrumCore for Sonar

To use DrumCore with Sonar, you will want to configure the DrumCore settings accordingly.

To configure the DrumCore settings for Sonar:

- 1 Open the DrumCore plug-in window and click the Settings button.
- 2 Set the Export File Format options to match the File Type, Sample Rate, and Sample Format of your Sonar project (e.g., WAVE, 44.1 kHz, 24-bit). If the File Type, Sample Rate, or Sample Format doesn't match your Sonar project, Sonar will copy and convert the files to match.



At the time of this writing, Sonar does not support REX files other than with its RXP instrument (which does accept drag and drop from DrumCore). Disable the Export REX/ACID option in DrumCore's Settings.

## Drag and Drop Audio and MIDI to Sonar

You can easily drag and drop an audio (hits, loops, or fills) or MIDI files from DrumCore's Results list into Sonar's Tracks window. This gives you the flexibility to arrange audio files from DrumCore's

extensive database in Sonar any way you want. It's a great way to quickly and easily compose complete, professional rhythm parts for a whole song or to just work with a scratch track to come up with new ideas.

When dragging and dropping audio, Sonar will place the audio in the target track. If you drag and drop onto any audio or MIDI tracks the data from DrumCore will be added to that track.

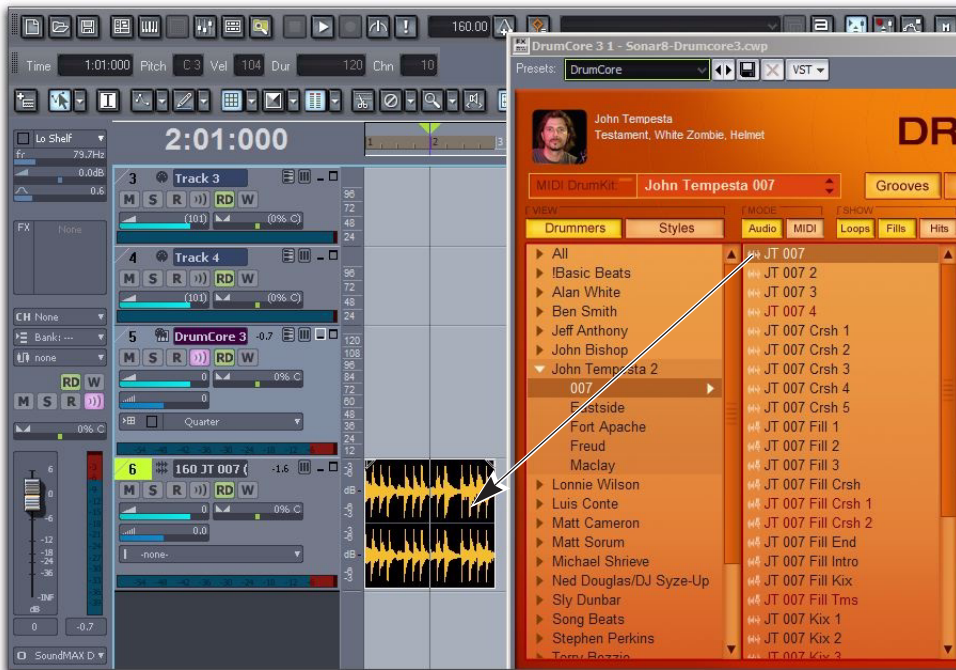


Figure 15. Dragging and dropping groove from DrumCore to Sonar

## Playing DrumCore's MIDI Drum Module with Sonar

DrumCore's MIDI Drum module can be played directly from Sonar, and monitored in Sonar. This gives you access to DrumCore's world-class sampled DrumKits, while providing you with the flexibility of being able to do your own drum programming in Sonar.

### To play the DrumCore MIDI Drum module with Sonar:

- 1** Launch Sonar and open an existing project or create a new project.
- 2** Configure Sonar to monitor DrumCore (see "Configuring Sonar with DrumCore" on page 55).
- 3** In DrumCore, select the desired DrumKit from the DrumKit menu (see "DrumKits" on page 21).
- 4** In Sonar, create one or more new MIDI tracks (or use existing MIDI tracks) and select DrumCore as the destination.
- 5** Select DrumCore from the MIDI track's Output pop-up menu.

Any MIDI data from the assigned tracks will play the currently selected DrumKit in DrumCore.

To automatically record DrumCore in Sonar, select one or more DrumCore tracks in Sonar and choose Tracks > Freeze Synth. Any MIDI routed to DrumCore plays back and DrumCore's audio output is recorded into Sonar.

## Configuring Sonar to Monitor Multiple Outs from DrumCore

To route DrumCore outputs to multiple audio tracks in Sonar for independent mixing and processing:

- 1** In Sonar, select Insert > Soft Synth > vstplugins > DrumCore.
- 2** In the Insert Soft Synth Options dialog, select either or both the All Synth Audio Outputs: Stereo and the All Synth Audio Outputs: Mono options to use multiple stereo and/or mono outs from DrumCore.
- 3** Click OK. Sonar creates multiple new stereo and/or mono audio tracks, and a single new MIDI track.
- 4** Assign the outputs for pads in DrumCore that will correspond to each audio track in Sonar accordingly (see Figure 16 on page 58).
- 5** Assign the track inputs in Sonar to the corresponding DrumCore outputs (see Figure 17 on page 58).





Figure 16. Assigning the Snare pad output to Stereo 3-4 to play through the corresponding audio track in Sonar



Figure 17. Selecting the corresponding DrumCore output as the track input in Sonar

---

## Using DrumCore with Other Audio and MIDI Applications

DrumCore can be used in most any host application that supports AU, RTAS, or VST instrument plug-ins. For example, you may want to use DrumCore with applications like Acid®, Adobe® Audition™, Fruity Loops™, Samplitude™, Tracktion™, Garage Band™, or even MAX/MSP. Consult the manufacturer's documentation on the application's plug-in implementation for more information.

Likewise, DrumCore's drag and drop export of audio and MIDI files should work with any application that supports drag and drop import of audio and MIDI. Consult the manufacturer's documentation on the application's drag and drop import capabilities.





# Index

## A

- Ableton Live 31
- Acid 59
- Adobe Audition 59
- AU
  - installing 5
  - with Logic 47
- Audio button 10
- Audio Units (AU) 47
- Audio Waveform/MIDI Sequence Overview 10
- authorization 6

## C

- Cubase 37
  - drag and drop to 39
  - playing DrumCore MIDI Drum module 40
  - recording DrumCore in 40

## D

- default export location 28
- Digital Performer 41
  - drag and drop 43
  - exporting audio to 43
  - exporting MIDI files to 44
  - monitoring DrumCore in 41
  - playing DrumCore MIDI Drum module 45
  - recording DrumCore in 42
- Drag and Drop
  - Export 17
- DrumCore
  - authorizing 6
  - configuring for Cubase 38
  - configuring for Digital Performer 41
  - configuring for Live 31
  - configuring for Nuendo 38
  - configuring for Pro Tools 50
  - configuring for Sonar 55
  - drag and drop 17

- drag and drop to Cubase 39
- drag and drop to Logic 47
- drag and drop to Pro Tools 51
- DrumKits 21
  - export 17, 18
  - exporting audio to Digital Performer 43
  - exporting MIDI files to Digital Performer 44
  - features 1
  - installing 5, 6
  - MIDI Drum module 21
  - monitoring in Digital Performer 41
  - monitoring in Live 31
  - recording in Cubase 40
  - recording in Digital Performer 42
  - recording in Live 34
  - recording in Nuendo 40
  - recording in Pro Tools 51
  - register 3
  - system requirements 3
  - using with Cubase 37
  - using with Live 31
  - using with Logic 47
  - using with Nuendo 37
  - using with Pro Tools 50
  - using with Sonar 55
- DrumCore Data folder 27
- DrumCore Data location
  - changing 27, 28
- DrumCore interface 9
- DrumCore Toolkit
  - features 2
- DrumKit Indicator 10
- DrumKits 21
  - Pad Settings 23
  - playing with Cubase 40
  - playing with Digital Performer 45
  - playing with Logic 48
  - playing with Nuendo 40
  - playing with Pro Tools 53
  - playing with Sonar 34, 57

- selecting 21
- Drummers button 10

## E

- Export Location settings 28
- ExportedContent folder 28
- exporting by drag and drop 17
- exporting DrumCore content 17, 18

## F

- File Type setting 28
- Fills button 10
- Fruity Loops 59

## G

- Gabrielize 15
  - clearing 16
  - history 16
- Gabrielize button 10
- Garage Band 59
- guide conventions 4

## I

- installation 5, 6

## L

- Live
  - monitoring DrumCore in 31
  - recording DrumCore in 34
- Logic 47
  - configuring 47
  - drag and drop to 47
  - playing DrumCore MIDI Drum module 48
- Loops button 10

## M

- metadata 14
- MIDI button 10

## N

- Nuendo 37
  - playing DrumCore MIDI Drum module 40
  - recording DrumCore in 40

## P

- Pro Tools
  - monitoring DrumCore in 50
  - playing DrumCore MIDI Drum module 53
  - recording DrumCore in 51
- Pro Tools 50
  - drag and drop to 51

## Q

- Queue Play Mode 10
- Queue Play Mode toggle 10

## R

- Results list 10
- RTAS 50
  - installation on Mac 5
  - installation on Windows 6

## S

- Sample Format setting 28
- Sample Rate setting 28
- Samplitude 59
- selecting a MIDI DrumKit 21
- Settings
  - Export Location 28
- settings
  - Export Format 28
- Sonar 55
  - drag and drop 32, 56
  - playing DrumCore MIDI Drum module 34, 57
- Styles button 10

## T

- Tracktion 59
- Transport buttons 10

## V

- Volume meter 10
- Volume slider 10
- VST
  - installation on Mac 5
  - installation on Windows 6
  - with Ableton Live 31
  - with Cubase 37
  - with Sonar 55